



FOCUS

March 2nd, 2000

Frédéric Hemmer - IT Division

Outline

- Windows 2000 features
- Changes and impact
- Roadmap

FOCUS - March 2, 2000

2

Current status

- July's Proposal
 - Develop Desktop independently of Server
 - Prototype Server features
 - But ...
 - Initial tests with Windows 2000 Professional showed more problems than solutions when used in a NT 4 infrastructure
 - MS release date delayed ...
 - Windows 2000 prototype well under way
- ⇒ Decided to concentrate on Windows 2000 Workstation + Server together

FOCUS - March 2, 2000

3

Windows 2000 Key Features

- Active Directory
- Kerberos V5
- Server Management
- Offline folders
- DFS
- Windows Installer
- SMS

FOCUS - March 2, 2000

4

Server Platform



- Dual Pentium III 500 MHz
- 512 MB Memory ECC
- RAID 5 with RaidPort 0
- Hot swappable data disk drives
- Intel Server Management
- Adaptec Array Management
- < 100 CHF/GB (03/2000)
- ➔ Allows for “private” servers

FOCUS - March 2, 2000

5

Offline folders

- Files are cached locally
- My Documents folder (home directory) automatically redirected
- Portables use cache while offline
- Local cache hides network or server problems Connection to open programs/documents is preserved
- Files can be synchronized when network becomes available again

FOCUS - March 2, 2000

6

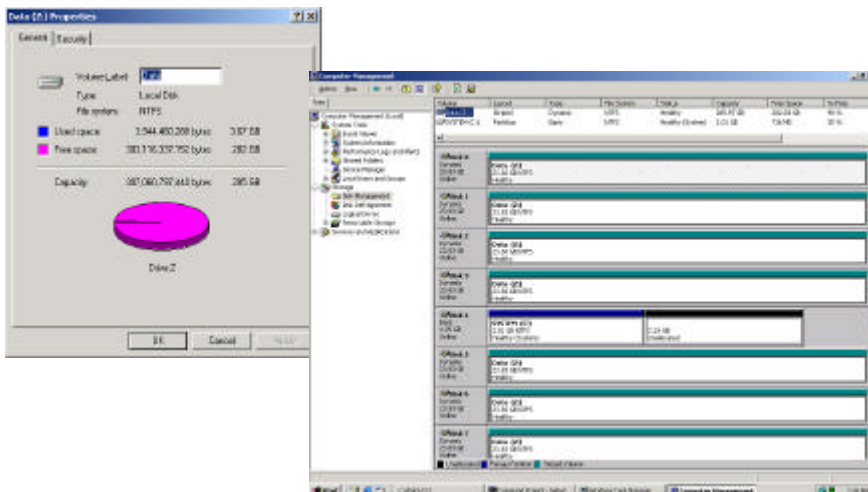
NTFS V5

- Log based
- Dynamic volumes
 - Software mirroring, RAID 5, striping, etc.
- Quotas
 - Per volume basis
- Compression
 - But hardly needed these days
- Encryption (EFS)
 - Possibility for an administrator to access encrypted files
- Many more features
 - Streams, sparse files, reparse points, hard links, etc.
- Performance
 - 5 streams RAID 0 : 114 MB/s Read; 55 MB/s Write

FOCUS - March 2, 2000

7

NTFS on PDP's IDE Disk Server

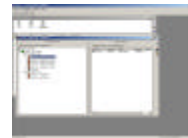
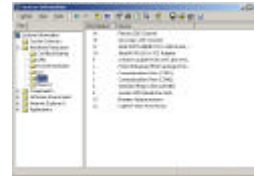


FOCUS - March 2, 2000

8

Application & Desktop Management

- Use of standard tools
 - Systems management Server
 - Inventory
 - Software deployment
 - Remote diagnostics & support
 - Windows Installer
 - The new standard for installing local applications
 - Required for the Windows logo
 - Large apps. availability being checked
 - Conversion tools appearing
 - Server Management
 - DMI based tools (Intel, Adaptec)
 - Windows Terminal Services
 - Active Directory
 - WSH + VBS



FOCUS - March 2, 2000

11

Summary of Benefits

- Single Windows platform for CERN
 - Easier management using standard tools
- Local applications
 - Faster to launch, resilient to network/server failures, standard install
- Offline folders
 - Looks local but is remote, resilient to network/server failures
- Plug & Play
 - Auto detects new hardware
- Large Disks
- Uniform file system name space
- Delegation easier (AD, Dfs, Server Management)

FOCUS - March 2, 2000

12

Changes for the user

- New Windows desktop (active desktop)
- My Documents Folder
- Home directories

\\win\dfs\Users\h\hemmer



- No Server names
 \\win\dfs\Projects\...
- No Drive letters needed anymore (J:,G:,Z:)
- Shortcuts & embedded references will need to be fixed

FOCUS - March 2, 2000

13

Impact on Hardware

- Minimal recommended configuration
 - Pentium 133, 64 MB RAM, 2 GB Disk with 650 MB free
- Power user may need more
 - Standard CERN new PC today :
Pentium III 600 MHz, 128 MB, 8.7 GB Disk (2100 CHF)
- ISA Ethernet card not supported

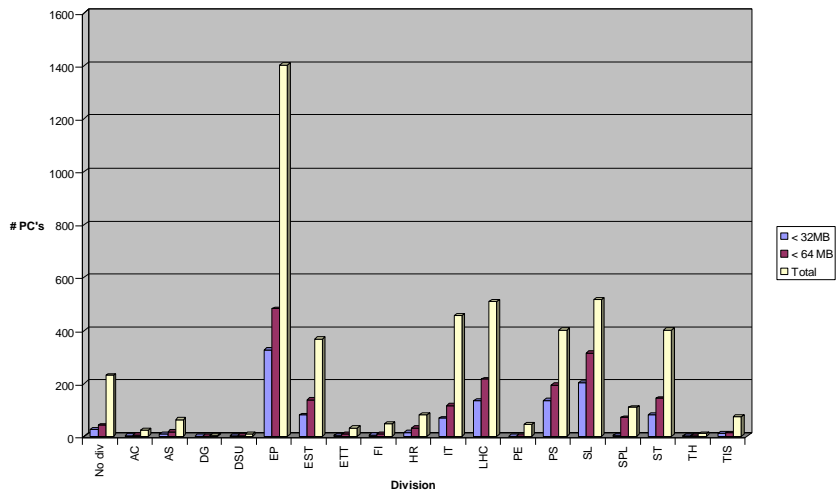


Some machines will need replacement

FOCUS - March 2, 2000

14

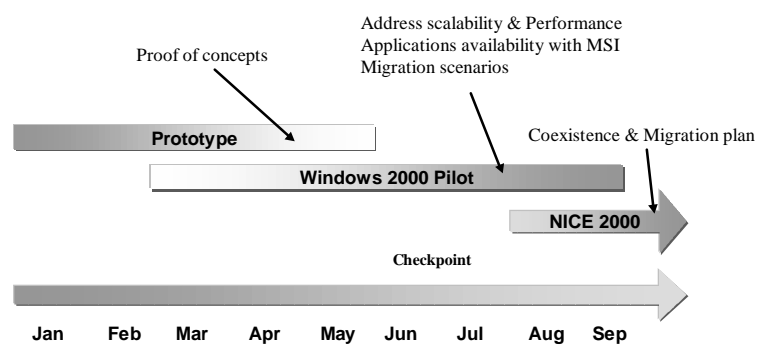
Under configured hardware



FOCUS - March 2, 2000

15

Schedule



FOCUS - March 2, 2000

16

Summary & plan

- Windows 2000 Pilot starts now
- Introduce Windows 2000 by the summer
- Some hardware may need change
- Applications availability being checked
- Decide NICE95/NT Freeze date by the end of the year

FOCUS - March 2, 2000

17