

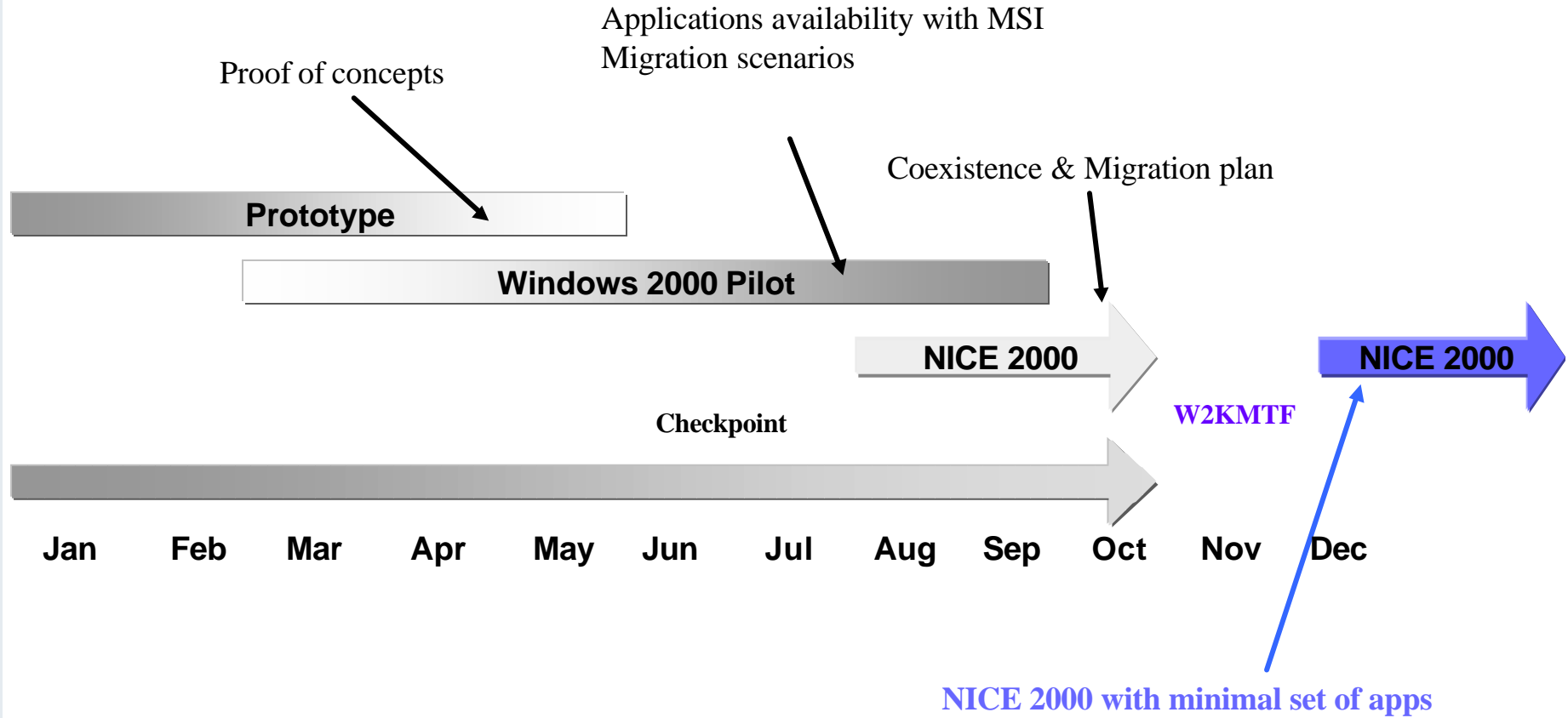


FOCUS

December 7th, 2000

Frédéric Hemmer - IT Division

Schedule



Lessons from the win.cern.ch pilot

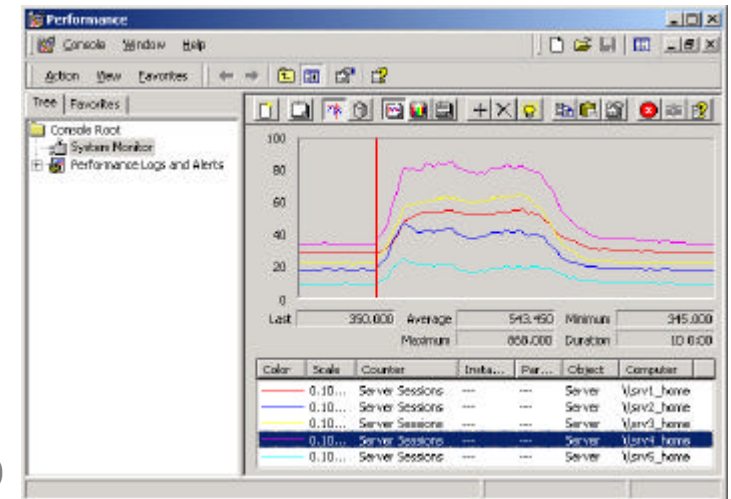
- DNS Integration
- SP1 deployment
 - Careful for traveling users
- Application upgrades
 - Initial choices are important
- DFS replication impractical
- DFS links limitation
- SMS License Metering
- ACPI/PnP related problems on portables
- NT profile problem
- Large user & My documents redirection
- Never, never disjoin the domain while unconnected

Progress Made over the last months (I)

- NetWare servers migrated to Windows 2000
 - Largely underestimated
 - Multiple name spaces
 - Support for Macintosh/NFS
 - Historical situation grown from early 90's
 - Large number of groups
 - Large number of (old) files
 - Complicated file protection scheme
 - 6.5 million files, .56 TB, 8.5 K Users
 - Complicated by hardware failures

Server: next steps

- Migration to dfs structure
 - (\\cern\dfs\users\h\hemmer)
 - Cernhome01 -> cernhome08
 - Can easily scale up
 - Coexists/Interoperate with NICE 95/NT
- Separate Mac/NFS users
 - Lack of robustness
 - Server resources used



Progress Made over the last months (II)

- NT Domain migrated to Active Directory
 - Mostly transparent
 - Affected Samba servers, PS+ Isolde (BDC)
 - New user registration
 - Info fetched from CCDB/LANDB
 - Including Main User and Responsible
 - Used for granting Local Admin rights
- NICE 2000 installation diskette available
 - As of December 1st; downloadable from the web
 - <http://www.cern.ch/win>
 - Autoupdated
 - Ethernet drivers for E100, 3COM 3C90x & 3C589, Xircom combo
 - Handles the local admin/computer account creation
 - With initial set of applications

Application Management

- Applications are now local
 - Robustness
 - Resiliency
 - No difference between laptop and desktop
- ... but need to be managed
 - Upgrades
 - Deployment using MS Installer
 - Assigned to computers with MSI
 - or
 - Published to Users
 - using MSI or ZAP files + VBS
 - Need to be local administrator

Applications deployment

- CERN applications
 - Reengineered for Windows 2000
 - Print Package (InstallShield 2000)
 - Zephyr (Client Server split, Server runs as a service)
- Coming with MSI
 - Using Group Policy for deployment
 - MS apps, LabView, AutoCAD, Exceed 7.2
- Not Coming with MSI
 - Repackaged using Veritas Winstall LE
 - Majority of applications
 - Non managed applications available thru setup

NICE 2000's Managed Applications

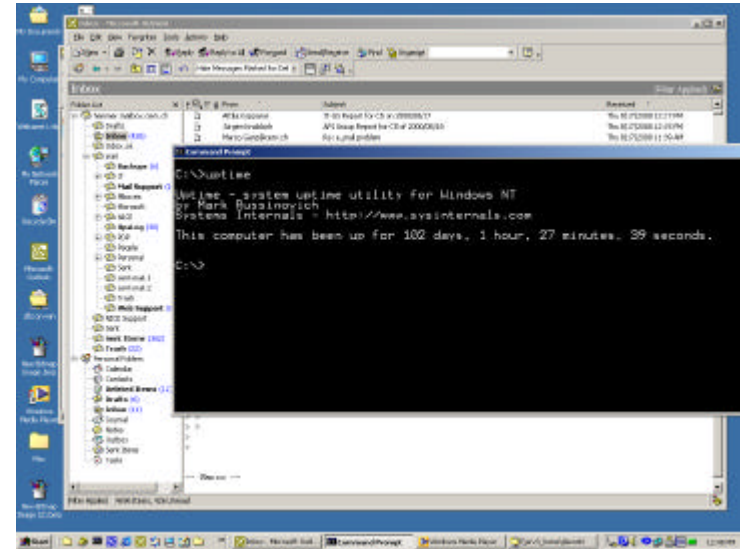
- Computer Assigned
 - Acrobat Reader, CERN Print Package, CERN Phone Book, MS Office 2000 (Access, Excel, FrontPage, Outlook, PowerPoint, Word, Zephyr), RealPlayer, WinZip
- User Published
 - Active Perl, DreamWeaver, Exceed, FileMaker, GSView, MS Project, MS Publisher, Remedy, Zephyr Client
- Coming
 - Norton Anti Virus, FrameMaker, AutoCAD
- Management Tools
 - Group Manager, Trustee Manager, etc.

NICE Management Tools

- As Web applications
 - Available for any client, anywhere
 - Uses 128-bit encryption
 - Allows for remote usage and other labs.
 - Can be used for Web site management/protection
 - *Demo*

NICE 2000 Benefits

- Windows 2000 is stable
- Applications are local
 - Robustness
 - Resiliency
 - Files cached locally
- Laptop users
 - PnP (*Demo*)
 - Power Management (Standby/Hibernate)
 - Offline folders/Offline Web page
 - You can carry all your documents everywhere
 - Authentication with new ACB
 - Access to files and resources



Next steps

- Identify all show stoppers at the w2kmtf
- Repackage supported applications that are needed
- Agree and maintain a migration plan with the w2kmtf
- Agree a NICE 95/NT freeze when appropriate at the w2kmtf and propose to Desktop Forum/FOCUS
- Monthly progress report to Desktop Forum
- Organize training as needed

Remote access to files

- No interlab dfs access has been tried yet
 - Other labs are far less advanced
 - Open potential security holes
 - Rpc, nbssession ports are known for attacks/vulnerabilities
- But...
 - Web can be used for sharing files
 - ftp in IE can be used to browse/manage files
 - NICE or Unix
 - *Demo*