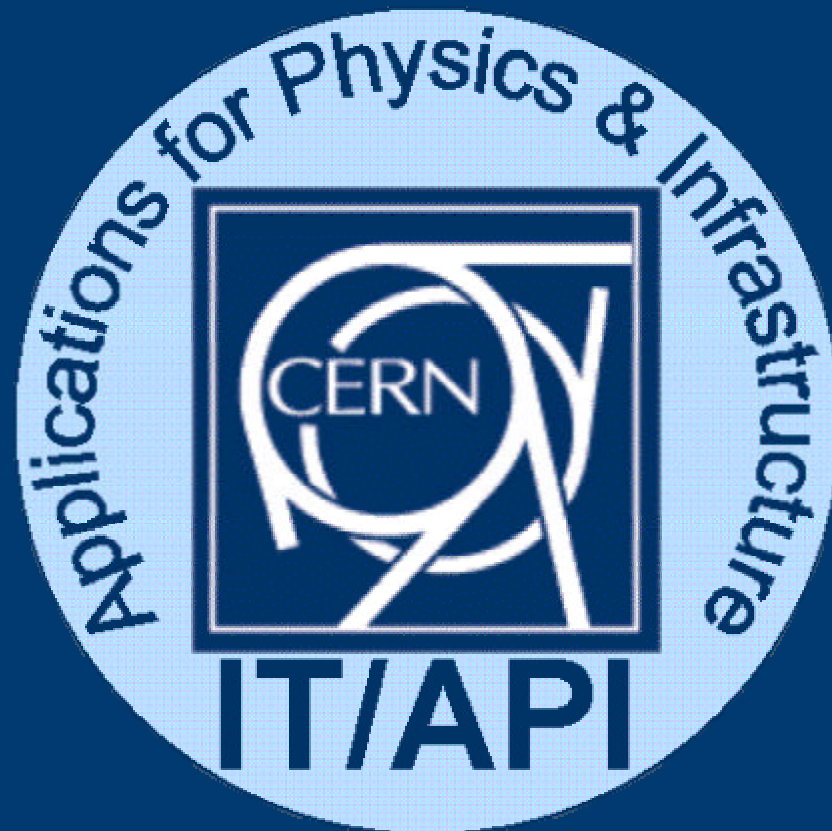


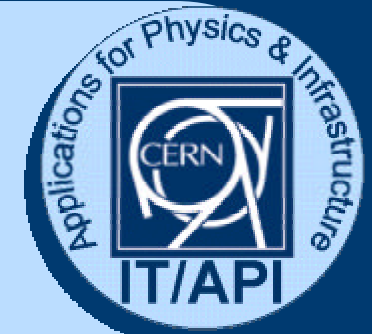
Supported Platforms for 2001



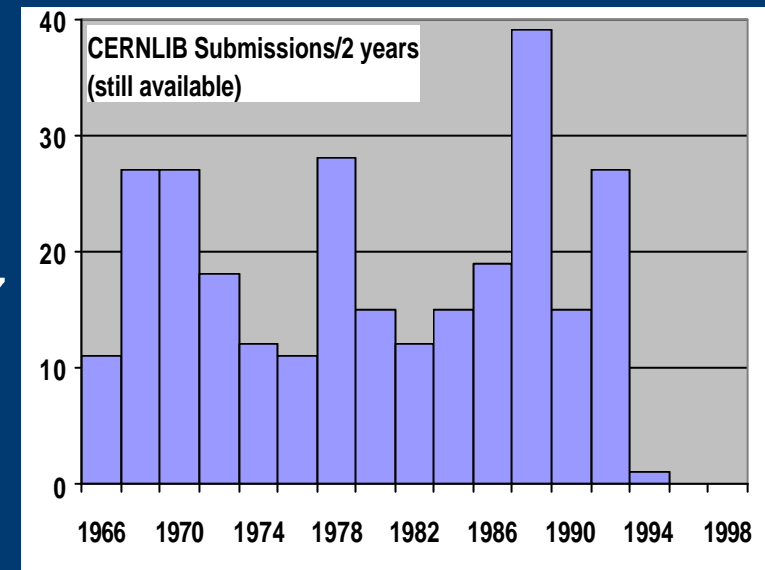
Jürgen Knobloch

FOCUS, 7 December 2000

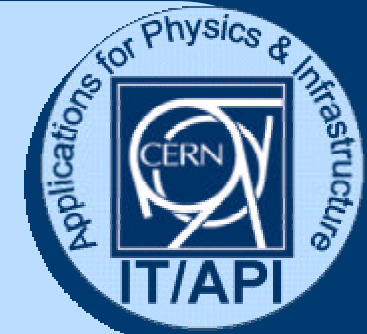
CERNLIB History



- 1962 Thresh, Grind, SUMX
- 1966 8 routines submitted that survived until now
- 1968 PATCHY introduced
- 1972 HYDRA
- 1976 GEANT, HBOOK, HPLOT
- 1984 FORTRAN-4 frozen → F77
- 1985 GEANT-3, ZEBRA
- 1988 PAW
- 1993 Manuals on the Web
- 1996 Last major release – move to cvs & cpp
in future only bug fixes & update O/S vsn.



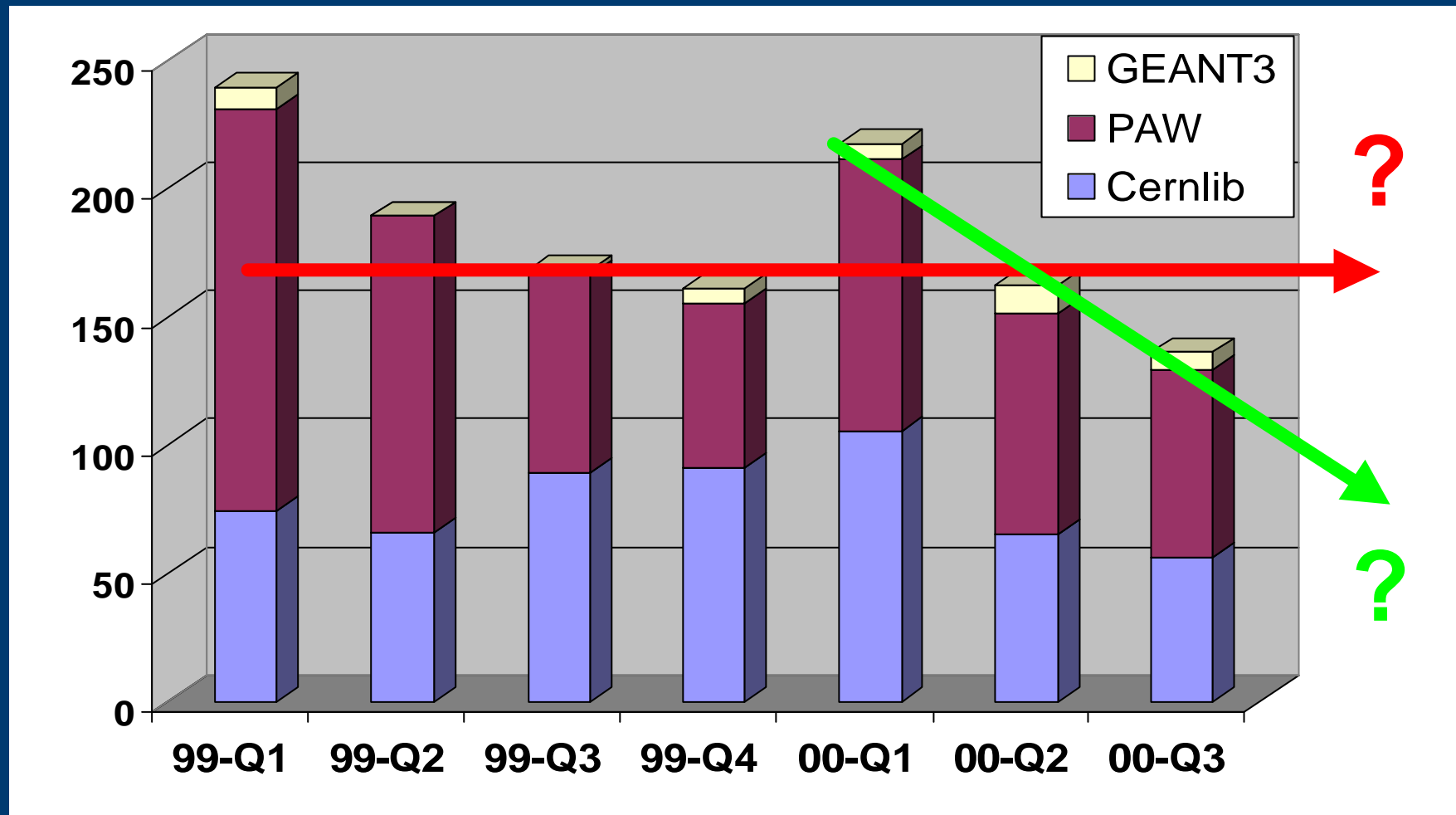
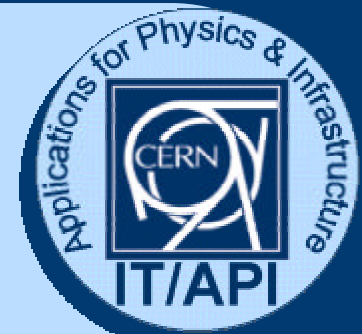
CERNLIB - Future



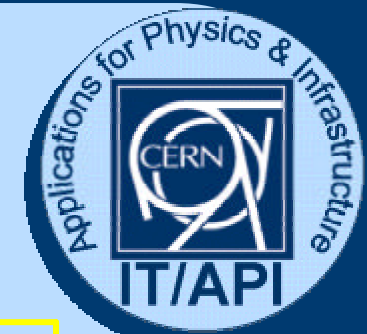
- Now open source
 - before 1300 access requests p.a.
- Resources continuously reducing
- No new functionality, no porting to new platforms
- Final release 2002
 - Maintenance for one year after that
 - Release and support only on Linux, Solaris, (HP & DUX for LEP)
 - Reference machines are disappearing
- Provide limited support until end 2003

CERNLIB support

requests:



Supported Platforms



Platform	O/S	C/C++	FORTTRAN
LINUX/Intel	RH 6.1	gcc-2.91.66 gcc-2.95.2	g77 0.5.25
Solaris	2.6	SC 4.2	SC 4.2
Solaris	2.7	SC 5.1 (WS6)	SC 5.1
HP	10.20	aCC A.0..23	F77 B.10.20.12
Digital	4.0d	3.11 – C++6.1	5.1-156
AIX	4.3	3.1.4	3.2.5.1
SGI	6.5	7.2	7.2

Run down

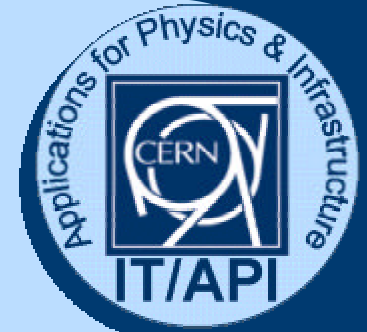
2000

2001

Run down

CERNLIB is also available on VMS and Windows NT
 CLHEP and GEANT4 are still available on NT (VC++ 6.0)

Summary

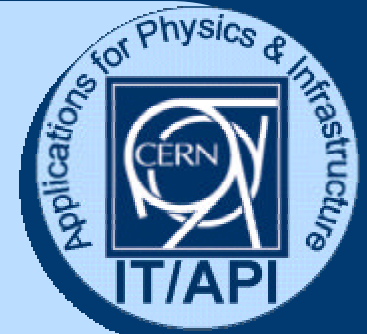


- Medium term: Linux and Solaris only
- Full release of ANAPHE: Linux & Solaris
- Move from gcc-2.91.66 (alias egcs 1.1.2) to gcc-2.95.2 **desired** (Objectivity 6, compiler features) – however RH 6.1 is based on 2.91
- Moving to Solaris 2.7 and SC 5.1 planned
- IT planning meeting:

A proposal should be made to FOCUS to formally withdraw support for physics software on the Windows platform.

A repository will be provided for Windows versions supported by other people

FrameMaker on Linux



FrameMaker 5.5.6 beta on Linux (ADOBE Statement)

The beta program for Adobe® FrameMaker® 5.5.6 on Linux® has now ended. Adobe thanks the participants of the program for downloading the beta, providing feedback and participating in market research.

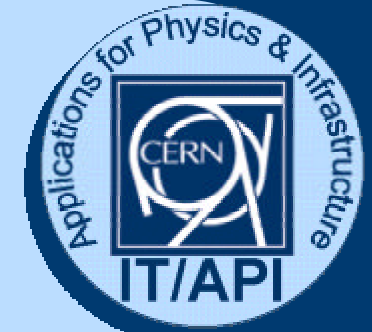
The beta is no longer available for download. Copies of the beta of FrameMaker 5.5.6 on Linux that have already been installed will expire on December 31, 2000, and will cease to operate at that time.

At this time, a commercial version of FrameMaker for the Linux platform is not available. Adobe FrameMaker 6.0 and Adobe FrameMaker+SGML 6.0 software is available for the Windows®, Mac and UNIX® platforms.

Documents created with the FrameMaker 5.5.6 beta for Linux may be opened with FrameMaker 5.5.6 or 6.0 or FrameMaker+SGML 5.5.6 or 6.0 on a Windows, Mac or UNIX platform. Alternatively, users of the FrameMaker 5.5.6 beta on Linux should save any documents created with the software to a text format before December 31, 2000, to ensure that it will be accessible to other applications after that date.

Comments on this beta program can be sent to: fmlinux@adobe.com

FrameMaker – API offer



- We have tested a script that will run FM on a Solaris server and display on a Linux terminal. This solution requires to have an AFS account. It will be put in place next year if ADOBE does not revert its decision.